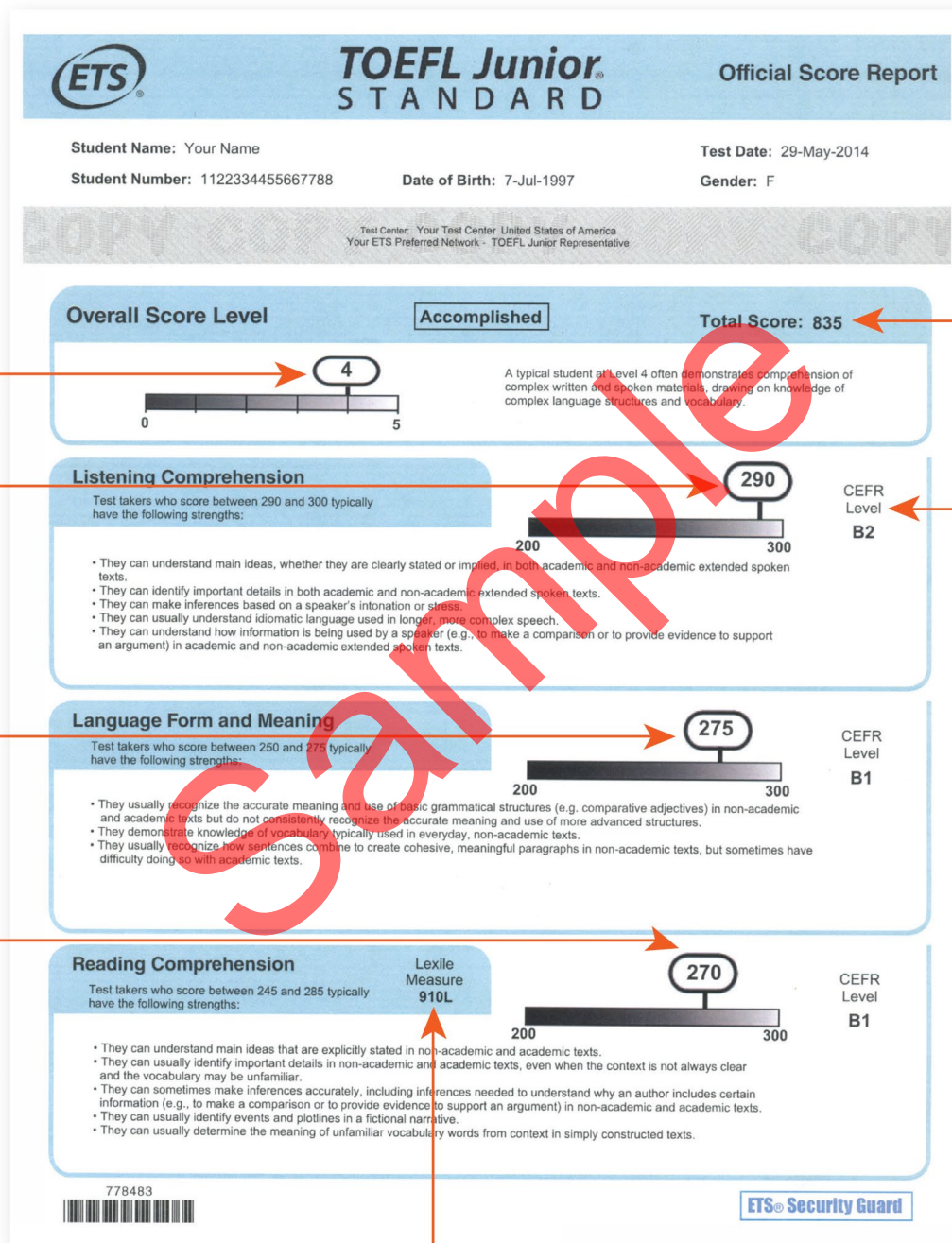


TOEFL Junior® Standard score reports are valuable tools that can help guide students. They include section and total scores, overall score levels as well as statements that students, parents and instructors can use to better understand students' proficiency levels and progress. For more detailed information about the TOEFL Junior Standard test, visit www.ets.org/toefl/junior.



The **Overall Score Level** is in the range of 1–5 and is accompanied by an overall performance descriptor.

Section Scores range from 200–300 and are reported in five-point increments with section performance descriptors.

Scores from the three different sections should not be directly compared because each test section is a separate measure of language proficiency.

The **Total Score** is a sum of the three section scores and ranges from 600–900.

The **Common European Framework of Reference (CEFR)** is a widely used tool for understanding different levels of language proficiency.

The score report provides a CEFR level for each section. The performance descriptors for each section are adapted from the CEFR level descriptors to reflect the TOEFL Junior test content and the age of the test takers.

The **Lexile® Measure** matches English-language readers with appropriate texts. Use your Lexile Measure to find books at the right reading level. Browse the Lexile Book Database and find the right books for you at www.lexile.com/toefl/junior.

The following table shows the TOEFL Junior® Standard test overall score levels, total scale scores, overall performance descriptors and Common European Framework of Reference (CEFR) typical profiles. The table was based on a research study published in 2015 and was refined in 2021, after analysis of the scores of all test takers between 2016 and 2018.

Performance descriptors represent performance in middle schools using English for instruction and show what a typical student at that level can do. The CEFR profile indicates the CEFR section-level scores a typical student would achieve on their overall TOEFL Junior score level. Because the overall score level is based on the total scale score achieved in the three test sections, the typical CEFR profile might not always apply to each individual student. For this reason, the CEFR level of each test section appears separately on the front page of the score report.

Overall Score Level	Total Scale Score	TOEFL Junior Standard Overall Performance Descriptors	CEFR Profile
5 Superior	865–900	Consistently demonstrates comprehension of complex written and spoken materials, drawing on knowledge of complex language structures and vocabulary	B2 for all sections
4 Accomplished	785–860	Often demonstrates comprehension of complex written and spoken materials, drawing on knowledge of complex language structures and vocabulary	B1 for all sections
3 Expanding	730–780	Demonstrates comprehension of some complex written and spoken materials and most basic materials, drawing on knowledge of basic language structures and vocabulary	Mostly B1 for all sections, but occasionally A2
2 Progressing	625–725	Occasionally demonstrates comprehension of basic written and spoken materials, drawing on knowledge of basic language structures and vocabulary	Mostly A2 for all sections, but occasionally A1 for Reading and Listening
1 Emerging	600–620	Can comprehend some very basic written and spoken texts, drawing on knowledge of basic language structures and vocabulary, but needs to further develop these language skills and comprehension abilities	Mostly A1 for Listening and Reading; mostly A2 for Language Form and Meaning

The TOEFL Junior section scores are mapped to the CEFR levels to give students, parents and instructors an opportunity to see a student’s level on a global scale.

Section	CEFR Below A2	CEFR Level A2	CEFR Level B1	CEFR Level B2
Listening Comprehension	Under 210	210–240	245–285	290–300
Language Form and Meaning	Under 210	210–245	250–275	280–300
Reading Comprehension	Under 210	210–240	245–285	290–300

Acceptable Scores and Appropriate Uses

Each school determines for itself what scores, or ranges of scores, are acceptable. There is no specific passing or failing score set by ETS for the TOEFL Junior Standard test. Based on the test design and the validity evidence collected so far, TOEFL Junior Standard test scores are recommended for the following uses:

- Determining whether students have sufficient communicative skills to succeed in a classroom that uses English for instruction
- Placing students in English-language programs so they are matched with level-appropriate instruction
- Monitoring student progress over time to gauge learning and changes in proficiency
- Using performance feedback, including can-do statements for instructors, to tailor English instruction and guide conversations with parents

Recommended Score Validity — Two Years

The TOEFL Junior test measures a test taker’s current level of English-language proficiency and is not designed to be a predictor of future TOEFL iBT® scores. Because of the rapid development of English proficiency by test takers within the TOEFL Junior test’s recommended age range, it is recommended that scores not be used beyond two years. However, scores can be considered valid beyond two years if the test taker has provided evidence of having maintained the same level of English language learning. ETS does not require testing centers to retain test administration data beyond two years.